



**Department  
of Health**

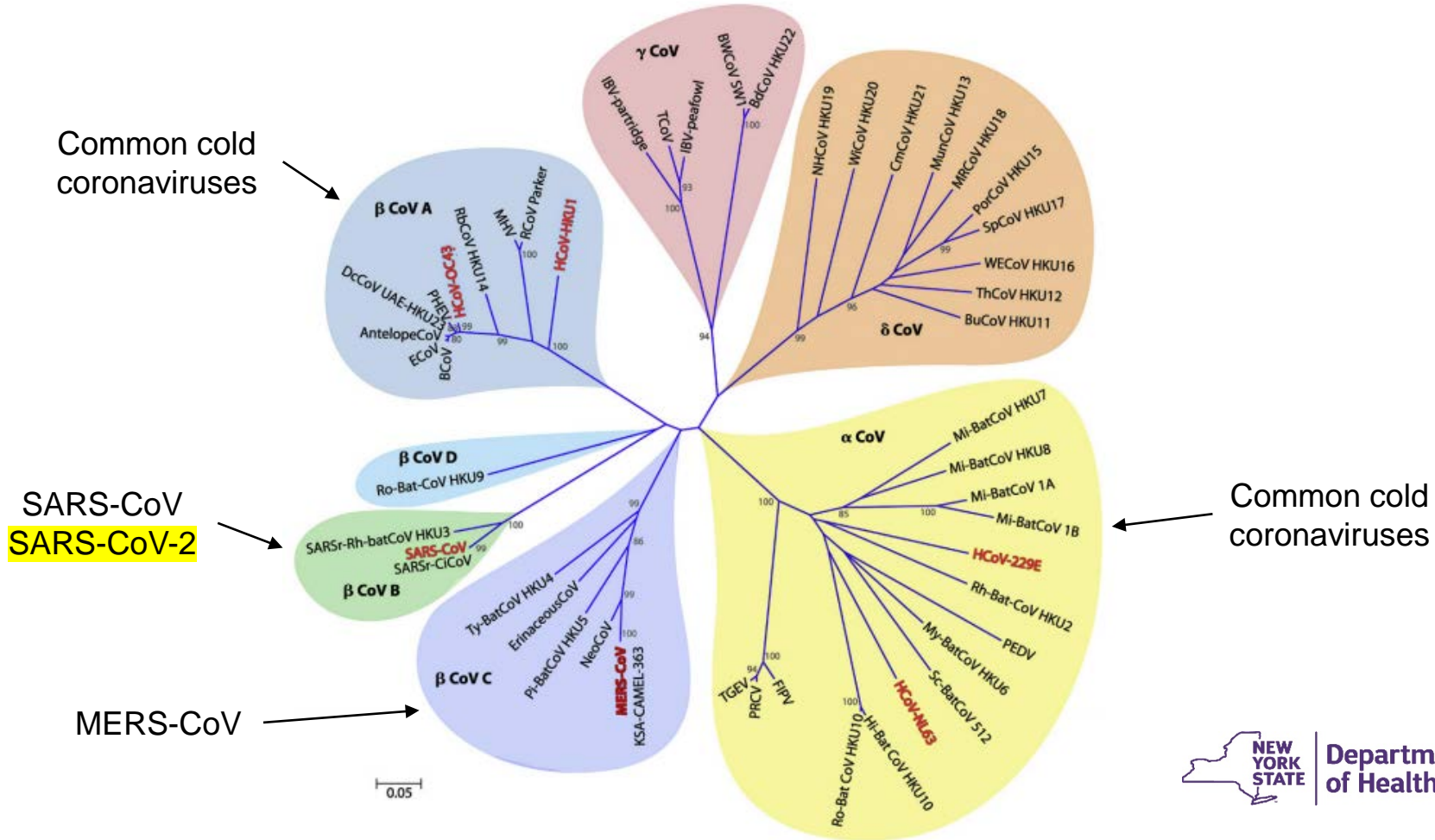
# **Update on COVID-19 for Higher Education Institutions in New York State**

**March 2, 2020**

As a reminder, the information on the PowerPoint is current only as of the date of the presentation (unless otherwise noted). The situation is rapidly evolving and for the latest numbers and/or guidance, please reference the links within the presentation.

# Agenda

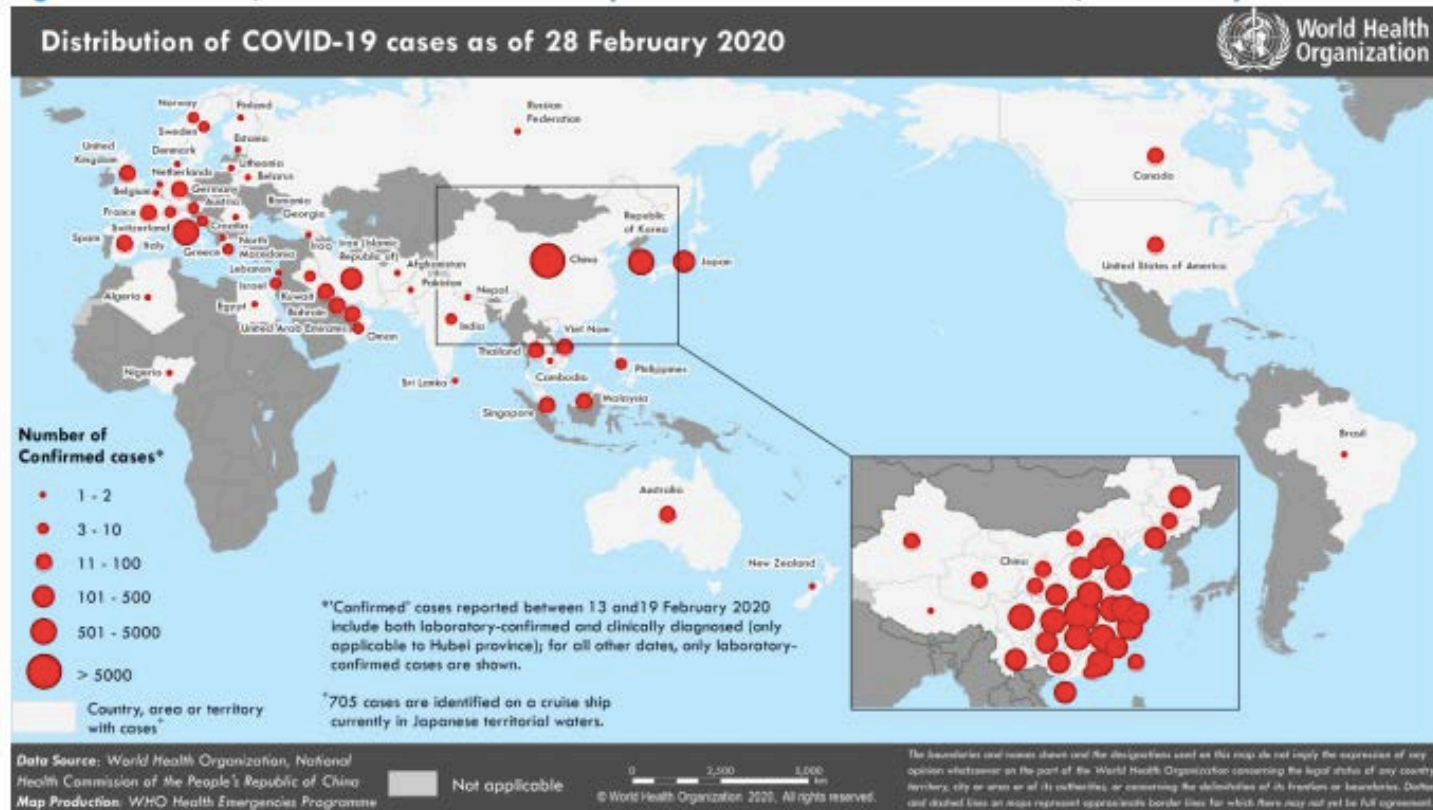
- Overview
- Epidemiological Update
- Shift in Response Strategies: Community Mitigation
- Student Travel Related Considerations
- Q&A



# Situation Summary: COVID-19 Global

- Globally:
  - 87,137 confirmed cases
- China:
  - 79,968 confirmed
  - 2,873 deaths
- Outside of China:
  - 7,169 confirmed
  - 58 countries
  - 104 deaths
  - Expanded local transmission in South Korea, Japan, Iran and Italy

Figure 1. Countries, territories or areas with reported confirmed cases of COVID-19, 28 February 2020



Data as of 28 February 2020. Source: WHO

## Situation Summary: COVID-19 U.S. PUIs

### COVID-19: Confirmed and Presumptive Positive Cases in the United States\*

	Confirmed	Presumptive Positive**	Total Confirmed & Presumptive Positive
Travel-related	12	1	13
Person-to-person spread	3	6	9
<b>Total cases</b>	15	7	22
<b>Total tested</b>	472	N/A	472
<b>Total deaths</b>	0	1	1

Data as of February 29, 2020. Source: CDC

# Situation Summary: COVID-19 New

Data last updated March 1, 2020

Test Results	New York State (Outside of NYC)	New York City (NYC)	Total Persons Under Investigation (PUI)
<b>Positive Cases</b>	<b>0</b>	<b>1</b>	<b>32</b>
Negative Results	22	8	
Pending Test Results	0	1	



## Situation Summary: COVID-19 New York State

- First positive case of COVID-19 in NYS
- A woman in her late 30s contracted the virus while traveling abroad in Iran and is currently isolated in her home
- The patient has respiratory symptoms, but is not in serious condition
- She has been in a controlled situation since arriving to New York
- The positive test was confirmed by New York's Wadsworth Lab in Albany
- General risk remains low in New York State at this time

# Epidemiological Update

- Evidence of community transmission in the U.S.
- Two fatalities from COVID-19 in Washington State
- $R_0$  rate of 2.2 which indicates more infectious than most influenza strains
- Based on early data from China, approximately 80% of cases have mild symptoms, and 15-20% severe.
- Case fatality rate thus far is between 1-2%, but is likely to drop some as we begin to learn more about cases with minor symptoms

# REVISED Criteria to Guide Evaluation of Patients Under Investigation (PUI) for COVID-19

Clinical Features	&	Epidemiologic Risk
Fever <sup>1</sup> <b>or</b> signs/symptoms of lower respiratory illness (e.g. cough or shortness of breath)	AND	Any person, including healthcare workers <sup>2</sup> , who has had close contact <sup>3</sup> with a laboratory-confirmed <sup>4</sup> COVID-19 patient within 14 days of symptom onset
Fever <sup>1</sup> <b>and</b> signs/symptoms of a lower respiratory illness (e.g., cough or shortness of breath) requiring hospitalization	AND	A history of travel from affected geographic areas <sup>5</sup> (see below) within 14 days of symptom onset
Fever <sup>1</sup> with severe acute lower respiratory illness (e.g., pneumonia, ARDS) requiring hospitalization and without alternative explanatory diagnosis (e.g., influenza) <sup>6</sup>	AND	No source of exposure has been identified

## Geographic Areas with Sustained Transmission (Community or Widespread)

*Last updated February 28, 2020*

- China ([Level 3 Travel Health Notice](#))
- Iran ([Level 3 Travel Health Notice](#))
- Italy ([Level 3 Travel Health Notice](#))
- Japan ([Level 2 Travel Health Notice](#))
- South Korea ([Level 3 Travel Health Notice](#))

As of 3/2/2020: <https://www.cdc.gov/coronavirus/2019-ncov/hcp/clinical-criteria.html>



Department  
of Health

# Containment Strategies – Successful to Date

- Travel restrictions
- Airport entry screening
  - Customs and Border Protection (CBP) and CDC screen passengers returning from China for symptoms, travel to Hubei province and close contacts
- Movement restrictions and monitoring of people at high and medium risk
- Lab testing of symptomatic individuals at increased risk
- The goal of containment strategies is to rapidly identify new cases and limit secondary transmission to persons who are under isolation so exposures are limited and transmission chains are suspended

## NYSDOH Response Activities - Continued

- Working closely with CDC, NYCDOHMH, local health departments, and other NYS agencies, including SED
  - Airport Screening
  - Isolation & Quarantine operations
  - Monitoring of individuals meeting risk criteria
  - Laboratory testing
- Public education
  - Webpage and [public service announcement](#)
  - Hotline for information on COVID-19 (1-888-364-3065)
- Healthcare provider and healthcare facility education
  - Advisories, webinars, resources

# Response Strategy

- Shift to maintain dual, simultaneous response strategies:
  - Aggressive, containment, case-based control measures
  - Prepare to implement non-pharmaceutical interventions/ community mitigation

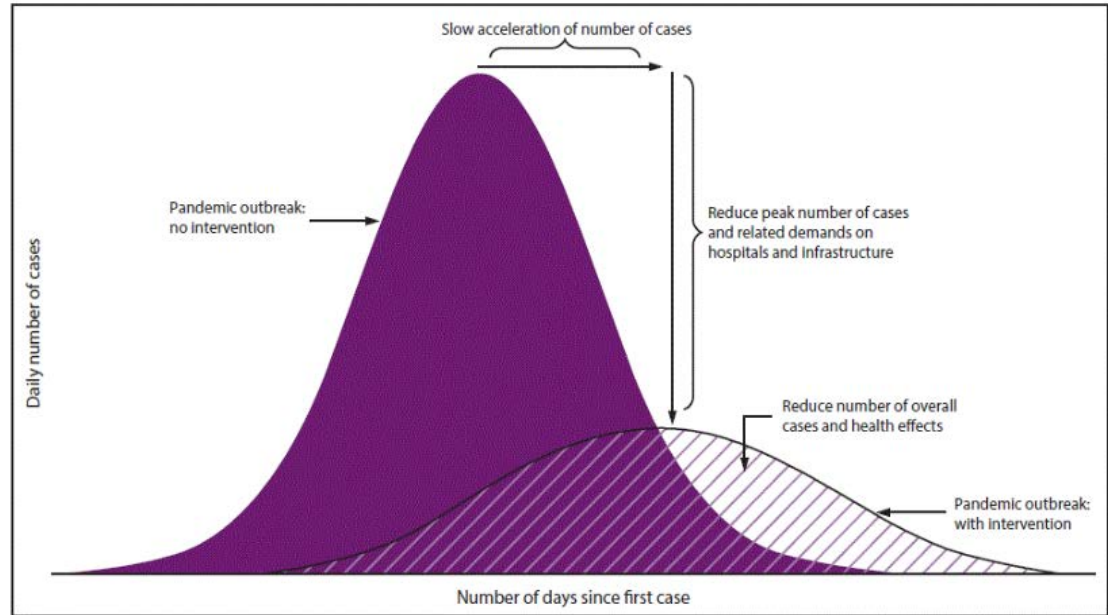
# Non-Pharmaceutical Interventions (NPIs)

## Community Mitigation

# Goals for the Use of NPIs

- Delay exponential growth in cases
  - Provide more time for preparation
  - Allow flu season to end
- Decrease height of the peak
  - Eases peak demand on healthcare and public health systems
- Reduce total number of cases

FIGURE 1. Goals of community mitigation for pandemic influenza



Source: Adapted from: CDC. Interim pre-pandemic planning guidance: community strategy for pandemic influenza mitigation in the United States—early, targeted, layered use of nonpharmaceutical interventions. Atlanta, GA: US Department of Health and Human Services, CDC; 2007. <https://stacks.cdc.gov/view/cdc/11425>.



Centers for Disease Control and Prevention

**MMWR**

Morbidity and Mortality Weekly Report

Recommendations and Reports / Vol. 66 / No. 1

April 21, 2017

## Community Mitigation Guidelines to Prevent Pandemic Influenza — United States, 2017



Continuing Education Examination available at <http://www.cdc.gov/mmwr/cme/conted.html>.



U.S. Department of Health and Human Services  
Centers for Disease Control and Prevention



# NPI Background

- Goal is to reduce the societal impact of pandemic
- Written for pandemic influenza; broadly applicable to other respiratory illnesses
- NPIs are actions that people and communities can take to help slow the spread of respiratory virus infection, including seasonal and pandemic influenza
- Often are the most readily available interventions to help slow transmission of the virus in communities – especially important before vaccines are available
- NPIs can be phased in, or layered, on the basis of pandemic severity and local transmission patterns over time

# Categories of NPIs

- Personal NPIs
  - Measures for everyday use
  - Measures reserved for pandemics
- Community NPIs
- Environmental NPIs - Environmental Surface Cleaning Measures

# Personal Protective Measures for Higher Education Students and Staff

- Voluntary home isolation
  - Ill students are sent home to stay when ill, except to obtain medical care or necessities
- Respiratory etiquette
  - Cover coughs and sneezes; use shirt sleeve if tissue not available
  - Avoid touching eyes, nose, and mouth
- Hand hygiene
  - Regular and thorough hand washing with soap and water, or alcohol-based hand sanitizers



# Personal Protective Measures Reserved for Pandemics

- Voluntary home quarantine
  - Exposed, non-ill household members stay home for one estimated incubation period
- Use of face masks in the community
  - Might be worn by ill persons during severe, very severe, or extreme pandemics when in contact with household members and when crowded community setting cannot be avoided
  - Not recommended for use by well persons, except under special, high-risk circumstances\*
    - e.g., caring for ill family member at home

\*Surgeon General urged public to refrain from buying face masks so healthcare personnel have adequate supplies.

# Community NPIs - School Closures and Dismissals

- There are different types of school closure actions
- Selective school closures and dismissals
  - Schools that serve students at high risk for complications, especially when transmission rates are high (e.g., certain medical conditions, child care <5yrs)
  - Goal to protect high-risk persons, not reduce community virus transmission
- Reactive school closures and dismissals
  - When many students or staff are ill and there are not enough staff to ensure safety
  - Unlikely to affect community virus transmission

# Community NPIs – Higher Education Closures/Dismissals

- Preemptive, coordinated closures and dismissals
  - During severe to extreme pandemics, not mild or moderate
  - School closure – all staff and students stay home
  - School dismissal – staff report but students stay home (distance learning)
  - Preemptive – before many students and staff become ill
  - Coordinated – simultaneous or sequential closings in a jurisdiction
- Length of closure determined by objective
  - Gain time for assessment of transmissibility/severity in very early stages (up to 2 weeks)
  - Slow spread of virus in areas beginning to experience local outbreaks (up to 6 weeks)
  - Allow time for vaccine production and distribution (up to 6 months)



# Community NPIs – Social Distancing Measures For Higher Education

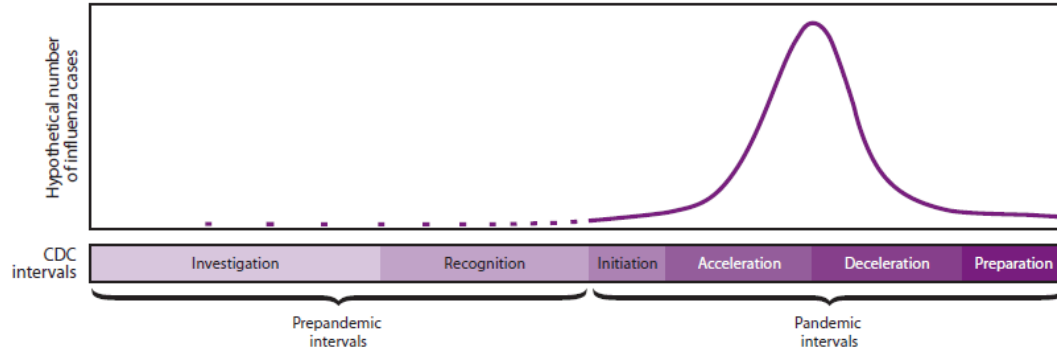
- Reduce virus transmission by decreasing the frequency and duration of social contact among persons of all ages. Reduce face-to-face contact.
- Multiple measures should be implemented simultaneously
- Increase distance between people to >6 feet
- Separate sick people ASAP, send home
- Schools/Colleges/Universities
  - Divide classes into smaller groups of students, space desks
  - Remote instruction/distance learning options
  - Allowing students who are not able to complete semesters abroad or who cannot attend classes in-person flexible ways of accruing academic credits
- Partner with Labor, GOER, ESD and others with employer supports for university/college staff
- Workplaces
  - Offer telecommuting, replace in-person meetings with teleconferences
- Modify, postpone, or cancel mass gatherings



# Environmental NPIs: Environmental Surface Cleaning Measures for Higher Education

- Eliminate viruses from frequently touched surfaces and objects
  - Tables, door knobs, toys, desks, and computer keyboards
  - In homes, child care facilities, schools, workplaces, and other places where persons gather
- Cleaning surfaces with detergent-based cleaners or EPA-registered disinfectants
- Use in seasonal influenza and all pandemic severity scenarios

# Timing of Community Mitigation







Investigation/ Recognition	Initiation	Acceleration	Deceleration	Preparation
NPI planning	Determine when community NPIs will be implemented; use PSAF results to select actions proportional to disease severity	Initiation of appropriate community NPIs	Planning for appropriate suspension of community NPIs	Discontinuing /modifying community NPIs

# Pre-Pandemic NPI Planning Guides

## Pre-Pandemic NPI Planning Guides

The following user-friendly Guides are to help public health departments and community settings put the 2017 Guidelines into action as part of their NPI pre-pandemic planning.

- [Get Ready for Pandemic Flu: Individuals and Households](#)  [PDF - 16 pages]
- [Get Ready for Pandemic Flu: Educational Settings](#)  [PDF - 16 pages]
- [Get Ready for Pandemic Flu: Workplace Settings](#)  [PDF - 16 pages]
- [Get Ready for Pandemic Flu: Event Planners](#)  [PDF - 16 pages]
- [Get Ready for Pandemic Flu: Community and Faith-Based Organizations Serving Vulnerable Populations](#)  [PDF - 16 pages]
- [Get Ready for Pandemic Flu: Health Communicators](#)  [PDF - 17 pages]

## Current CDC COVID-19 Travel Restrictions and Recommendations

- Avoid all nonessential travel to China, Iran, Daegu region in South Korea and regions in northern Italy
- Entry of foreign nationals suspended if recent travel in China and Iran
- Consider postponing travel to Japan
- Practice usual precautions in Hong Kong

# Travel-Related Considerations for Higher Education

- Recommend suspending study abroad programs for all university/college students and staff in currently impacted countries (China, Iran, Italy, Japan, and South Korea)
- Develop plans to suspend programs in all other countries, regardless of whether they are currently impacted by CDC travel alerts
- Students and faculty returning from currently impacted countries or regions of impacted countries will be required to be quarantined for 14 days upon return.
- Quarantine should be at home, if that is an option for the student.
- Alternatively, quarantines could occur on campus, if the schools can identify a single room with a private bathroom and if they can support other needs during quarantine (e.g. food, etc.).
- If neither of those options are available, the local health department where the campus is located will be directed to issue and support the quarantine.
- NYSDOH and local health departments will need assistance from colleges to obtain contact information for individuals being quarantined regardless of the location of the quarantine in order to ensure appropriate plans exist to support the quarantine and monitoring

# Guidance from the NYS Education Department

Programs and support services provided to all students, including those returning from studying abroad, should continue to meet program registration requirements.

- Section 52.2(c)(4) of the Regulations of the Commissioner of Education, provides regulatory relief concerning the granting of a semester hour of credit for fewer hours of instruction if the State or local government temporarily closes an institution due to a disaster (including an epidemic). The regulations and application form can be found at: <http://www.nysed.gov/college-university-evaluation/regulatory-relief-temporary-closure-institution-due-disaster>
- Where should questions be directed?
  - Questions about academic programs that lead to professional licensure: NYSED's Office of Professional Education Program Review (PEPR) at: [OPPROGS@nysed.gov](mailto:OPPROGS@nysed.gov)
  - Questions about other academic programs: NYSED's Office of College and University Evaluation (OCUE) at: [OCUEINFO@nysed.gov](mailto:OCUEINFO@nysed.gov)
  - Questions about financial aid issues: USDE's Federal Student Aid Office and the NYS Higher Education Services Corporation (HESC).

# QUESTIONS ?

# THANK YOU!